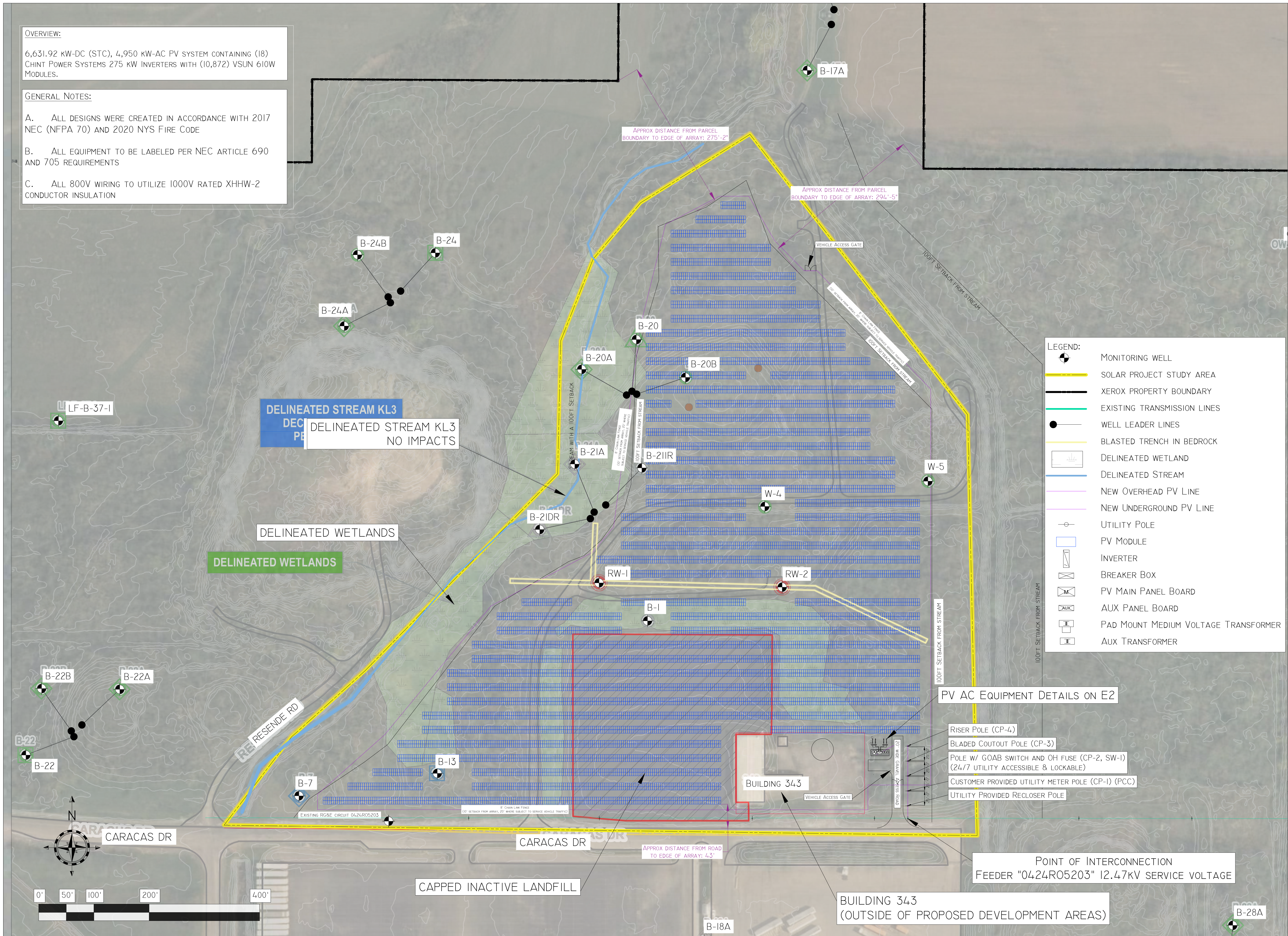


OVERVIEW:
6,631.92 kW-DC (STC), 4,950 kW-AC PV SYSTEM CONTAINING (18) CHINT POWER SYSTEMS 275 kW INVERTERS WITH (10,872) VSUN 610W MODULES.

GENERAL NOTES:
A. ALL DESIGNS WERE CREATED IN ACCORDANCE WITH 2017 NEC (NFPA 70) AND 2020 NYS FIRE CODE
B. ALL EQUIPMENT TO BE LABELED PER NEC ARTICLE 690 AND 705 REQUIREMENTS
C. ALL 800V WIRING TO UTILIZE 1000V RATED XHHW-2 CONDUCTOR INSULATION



XEROX CORPORATION SOLAR ARRAY
6.78 MWDC / 4.95 MWAC PHOTOVOLTAIC SYSTEM
139 CARACAS DR, WEBSTER, NY 14580

REVISIONS		SHEET #
#	CHANGE LOG	
0 2025-08-29	INITIAL DESIGN OF PROJECT	EI
1 2025-08-29	POLE LINE-UP MODIFIED PER UTILITY COMMENTS	
2 2025-08-28	LAYOUT MODIFIED FOLLOWING ENVIRONMENTAL SURVEY	
3 2025-08-16	ADDED FENCE AND REMOVED MODULES ABOVE BLASTED TRENCH	
4 2025-03-15	UPDATING MODULE SPEC, ADDED SCALE WARNINGS AND DISTANCE TO PROPERTY BOUNDARIES	
5 2025-05-05	PROJECT STUDY ADDED, REMOVED ARRAY OVER WENT PIPES (CONCRETE DRAINAGE FIELD)	
SCALE: No SCALE		ELECTRICAL LAYOUT
DRAWN BY: JPG		
DATE: 2025-03-31		