



## **fairlife Project Update August 2024**

# Project Update – Key Milestones

---

- ✓ Acoustic wall complete
- ✓ Berm graded and seeded
- ✓ Retention ponds in place
- Storm water drains in operation (SWPPP meetings with town continues)
- 50% complete on concrete tilt-up panels
- Fire hydrants close to complete
- Steel installation has started
- Roof decking to follow behind steel installation
- Automated warehouse slab complete, racking installation started



# Progress on site – aerial view Aug. 6, 2024

---



---

# FREQUENTLY ASKED QUESTIONS





# Site Plan Questions

Why is there no sound wall on the west side of the site?

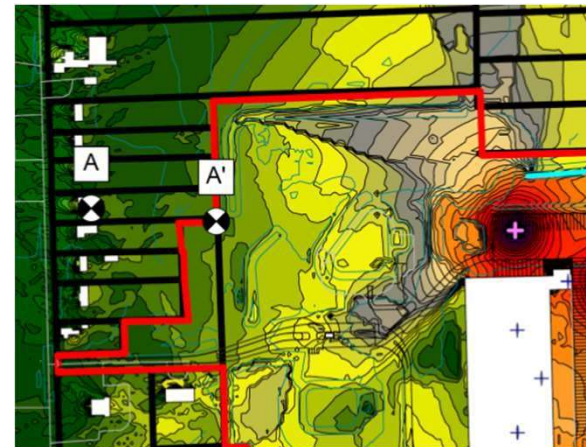
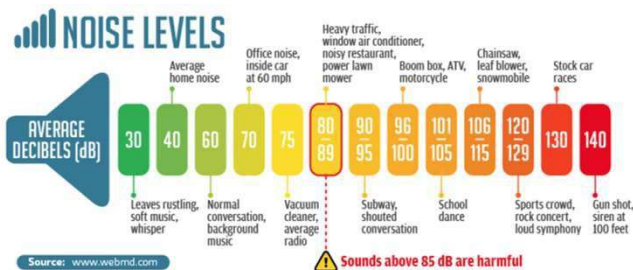
Answer:

- The acoustical analysis determined the sound was so low in the northwest corner of the property that an acoustic wall was not needed
- A section of the sound wall was added closer to the trailer parking to further reduce noise (red circle on top photo)



Driving Truck  
Sound Emissions

| Residence   | Property Line |
|-------------|---------------|
| A: 39 dB(A) | A': 42 dB(A)  |
| B: 48 dB(A) | B': 47 dB(A)  |
| C: 47 dB(A) | C': 48 dB(A)  |
| D: 48 dB(A) | D': 47 dB(A)  |
| E: 45 dB(A) | E': 46 dB(A)  |
| F: 46 dB(A) | F': 45 dB(A)  |

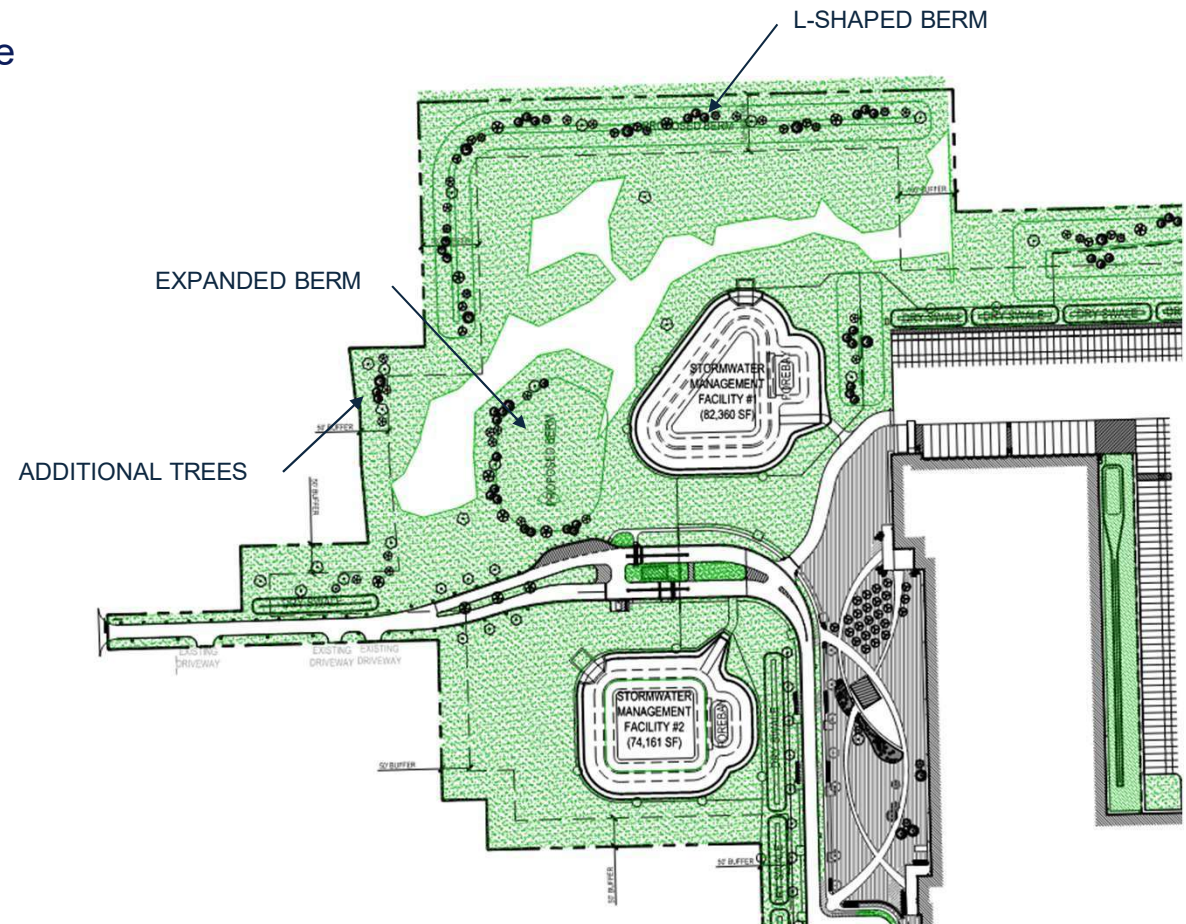


# Site Plan Questions

What trees and berms will be in place on the west side of the site?

Answer:

- Landscaping is currenting a work-in-progress
- Adding L-shaped berm on the west side
- Expanded berm (4-5ft high) west of the pond
- Adding additional mature trees in the property corner
- Berm + trees will be ~10-12ft high



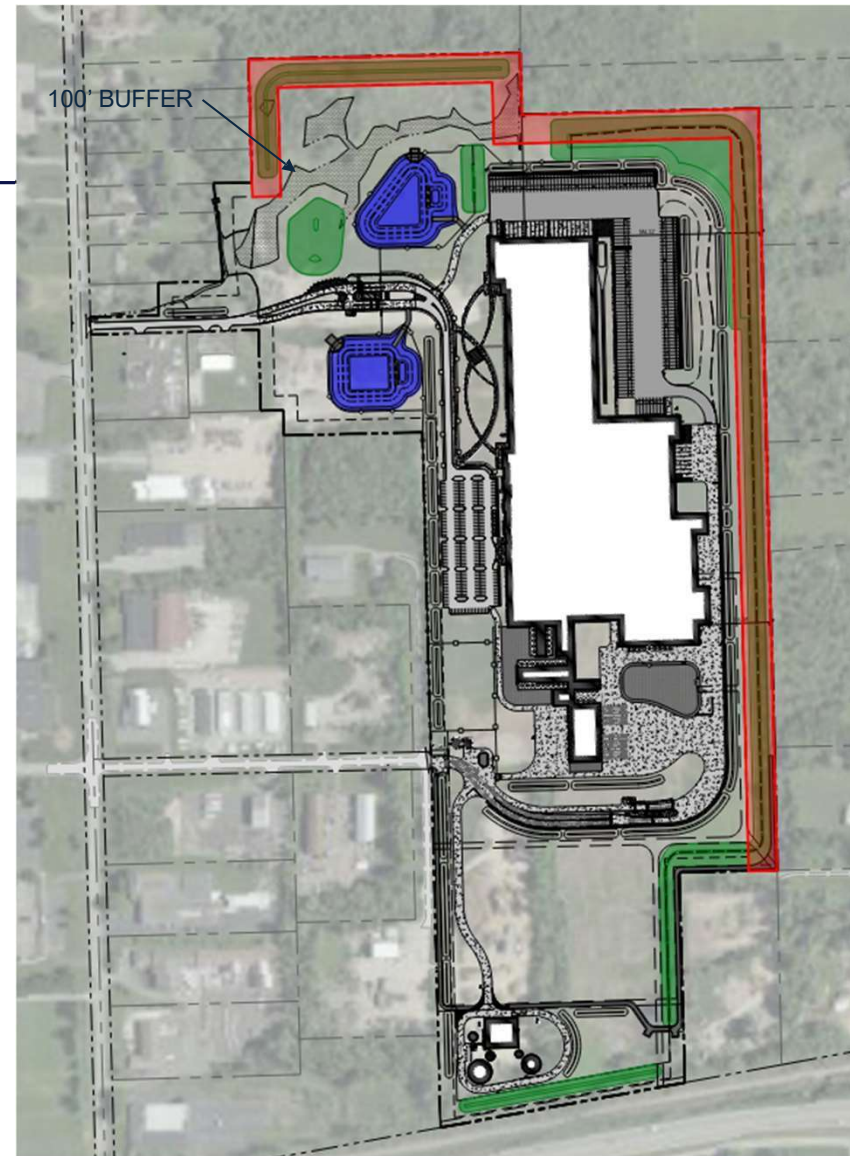
# Site Plan Questions

---

Has the 100' buffer been maintained with the site plans?

Answer:

- Yes, the 100' buffer has been maintained and there are no buildings or pavements within the buffer
- Landscaping, berms, acoustic wall, and stormwater improvements are allowed within the buffer





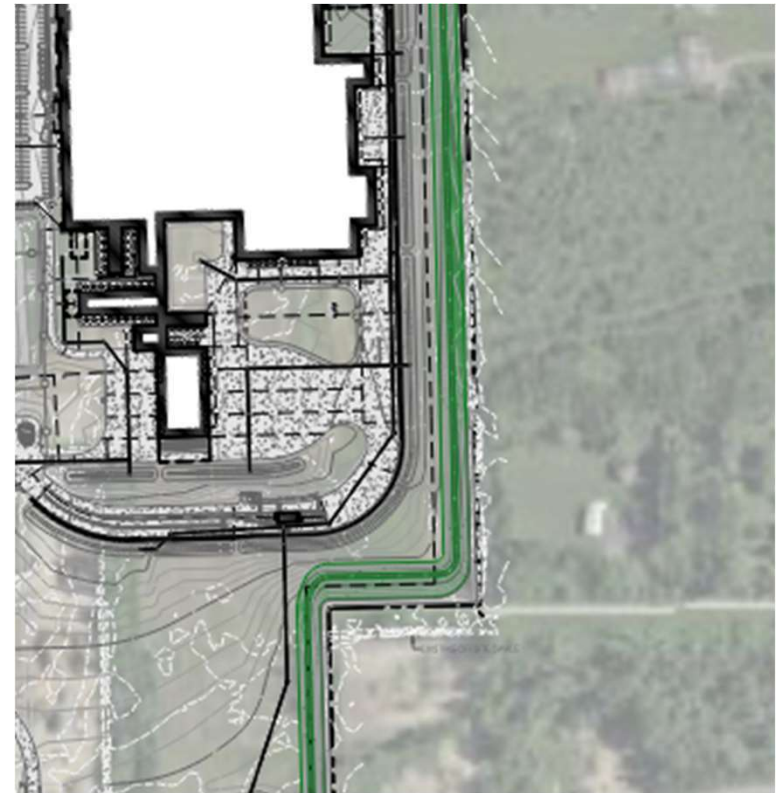
# Site Plan Questions

---

Why did the storm drainage east of the sound wall change?

Answer:

- The proposed berm and existing berm limited all flows from the east and from fairlife site
- Inlets were relocated to better capture the runoff from offsite residential lots.
- A v-bottom swale was added to capture runoff from the east and west
- The north will maintain existing slope

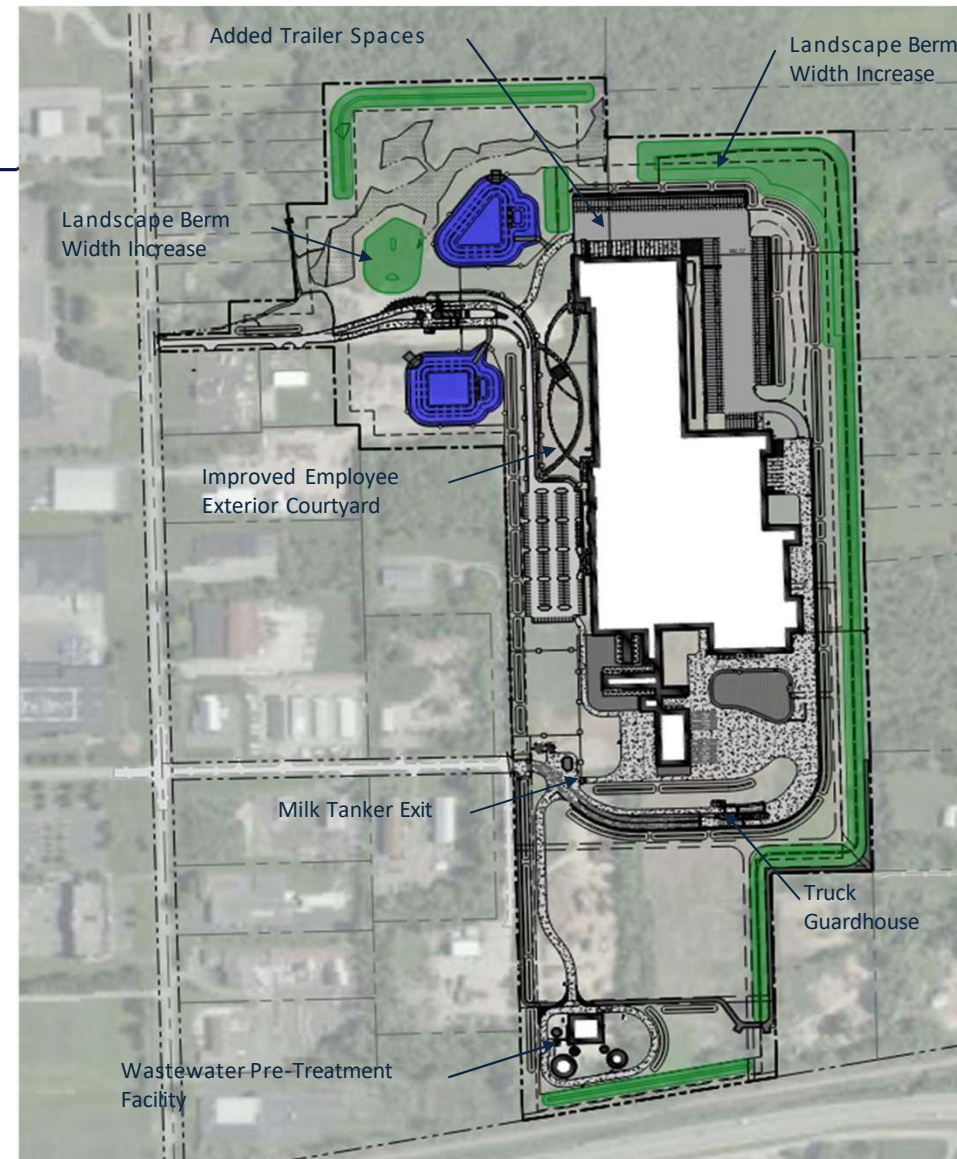




# Updates to Site Plan

Minimal updates have been made to the original site plan. After beginning construction, the following were identified as improvements that will be implemented.

- Removed the weigh scale building
- Moved the truck guardhouse
- Removed curved truck drive in the northeast corner
- Landscape berm increased in width
- Improved employee exterior courtyard
- Added Milk Tanker exit from Milk Receiving Area
- Added Trailer Spaces on the north side of the facility
- Improved wastewater pre-treatment design



---

For additional update or to ask a question about the fairlife project, please visit the project page on the [Town of Webster's website](#) or send an email to [communications@fairlife.com](mailto:communications@fairlife.com)

